

UNITS NUMBERS :

BLOCK PLAN AT TYPICAL FLOOR LEVEL

NOTE : The Unit plan and the Areas given here are Tentative.

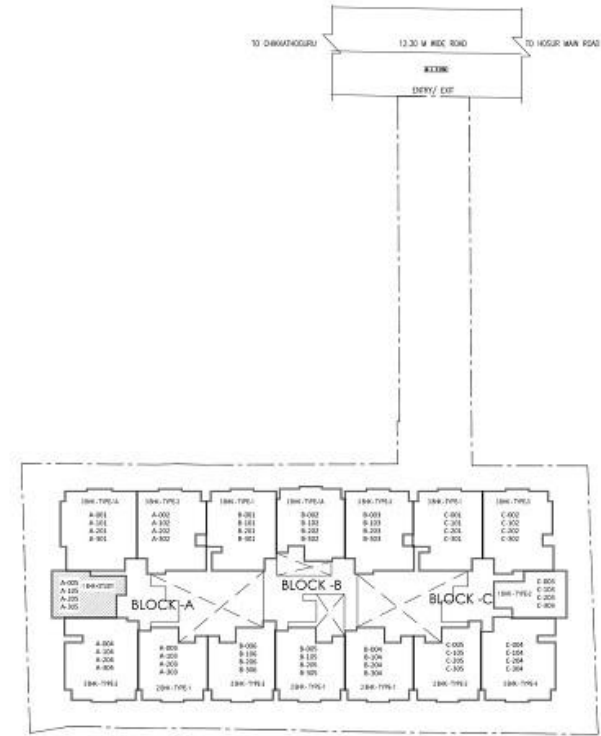
PROJECT :

# ASTORIA PARK

PROPOSED APARTMENT JOINTLY DEVELOPED BY  
N.D.DEVELOPERS PVT.LTD AND SUVASTU ESTATES  
PVT.LTD. ON HOSUR ROAD,BANGALORE

ARCHITECTS:

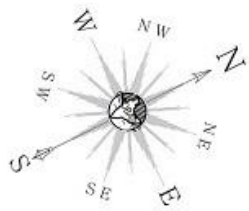




KEY PLAN

1 BHK + STUDY

SBA : 799 SQ.FT



UNITS NUMBERS :

- A-005
- A-105
- A-205
- A-305

NOTE : The Unit plan and the Areas given here are Tentative.

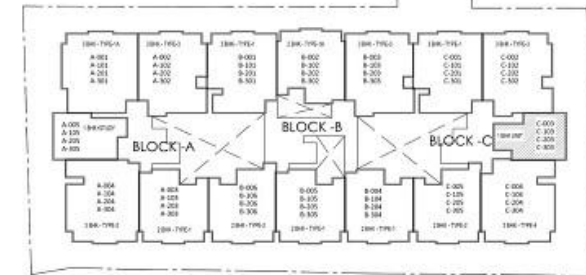
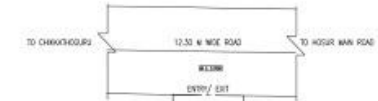
PROJECT :

# ASTORIA PARK

PROPOSED APARTMENT JOINTLY DEVELOPED BY  
N.D.DEVELOPERS PVT.LTD AND SUVASTU ESTATES  
PVT.LTD. ON HOSUR ROAD,BANGALORE

ARCHITECTS:

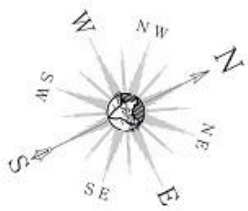




KEY PLAN

1 BHK UNIT

SBA : 803 SQ.FT



UNITS NUMBERS :

- C-003
- C-103
- C-203
- C-303

NOTE : The Unit plan and the Areas given here are Tentative.

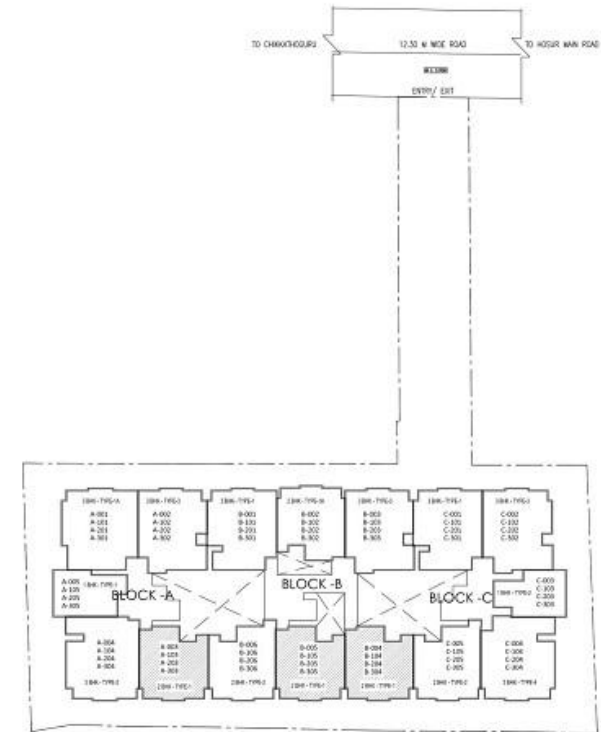
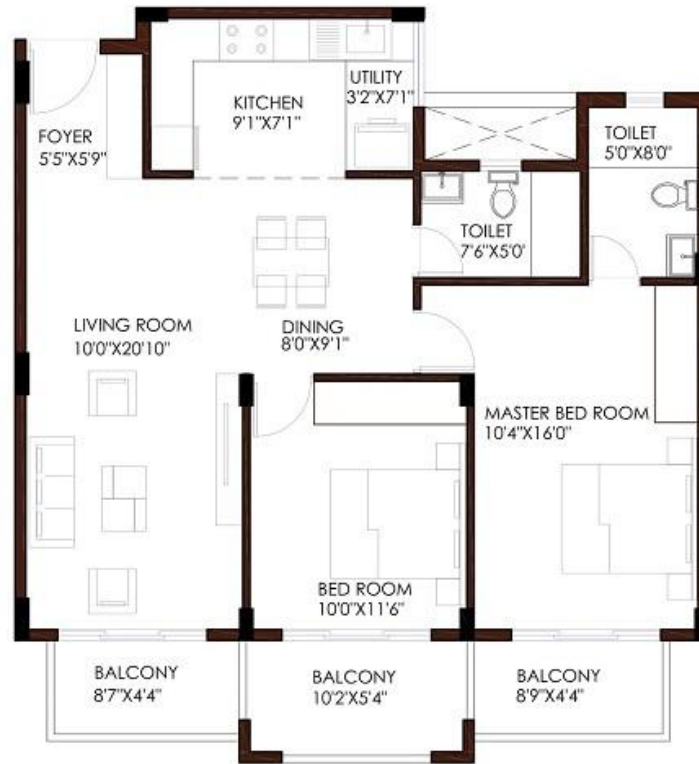
PROJECT :

# ASTORIA PARK

PROPOSED APARTMENT JOINTLY DEVELOPED BY  
N.D.DEVELOPERS PVT.LTD AND SUVASTU ESTATES  
PVT.LTD. ON HOSUR ROAD,BANGALORE

ARCHITECTS:

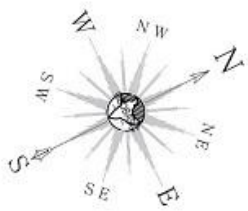




KEY PLAN

2 BHK + 2T - TYPE-1

SBA : 1240 SQ.FT



UNITS NUMBERS :

A-003 B-005 C-004  
 A-103 B-105 C-104  
 A-203 B-205 C-204  
 A-303 B-305 C-304

NOTE : The Unit plan and the Areas given here are Tentative.

PROJECT :

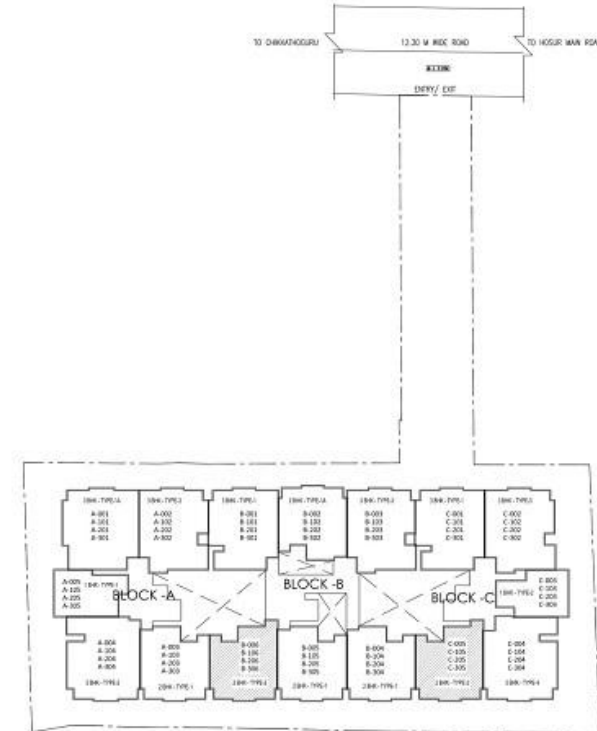
# ASTORIA PARK

PROPOSED APARTMENT JOINTLY DEVELOPED BY  
 N.D.DEVELOPERS PVT.LTD AND SUVASTU ESTATES  
 PVT.LTD. ON HOSUR ROAD,BANGALORE

ARCHITECTS:



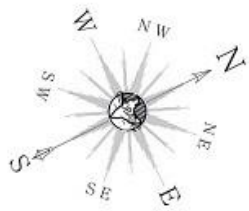




KEY PLAN

2 BHK + 2T - TYPE-2

SBA : 1275 SQ.FT



UNITS NUMBERS :

- B-006 C-005
- B-106 C-105
- B-206 C-205
- B-306 C-305

NOTE : The Unit plan and the Areas given here are Tentative.

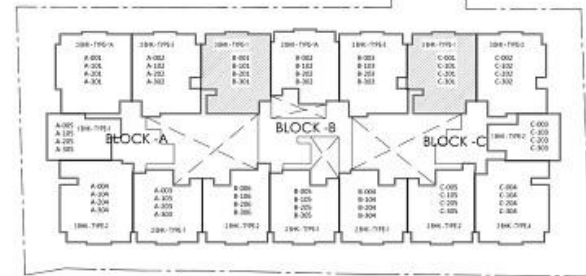
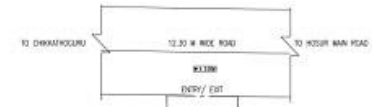
PROJECT :

# ASTORIA PARK

PROPOSED APARTMENT JOINTLY DEVELOPED BY  
N.D.DEVELOPERS PVT.LTD AND SUVASTU ESTATES  
PVT.LTD. ON HOSUR ROAD,BANGALORE

ARCHITECTS:

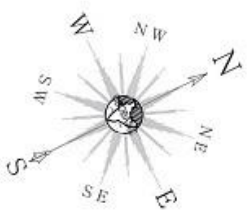




KEY PLAN

3 BHK + 2T - TYPE-1

SBA : 1425 SQ.FT



UNITS NUMBERS :

B-001	C-001
B-101	C-101
B-201	C-201
B-301	C-301


NOTE : The Unit plan and the Areas given here are Tentative.

PROJECT :

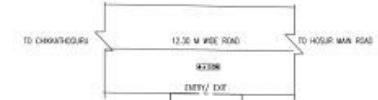
## ASTORIA PARK

PROPOSED APARTMENT JOINTLY DEVELOPED BY  
N.D.DEVELOPERS PVT.LTD AND SUVASTU ESTATES  
PVT.LTD. ON HOSUR ROAD,BANGALORE

ARCHITECTS:



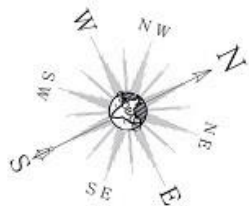
**Architect square**  
architects | interior designers



KEY PLAN

3 BHK + 2T - TYPE-3

SBA : 1459 SQ.FT



UNITS NUMBERS :

- |       |       |       |
|-------|-------|-------|
| A-002 | B-003 | C-002 |
| A-102 | B-103 | C-102 |
| A-202 | B-203 | C-202 |
| A-302 | B-303 | C-302 |

NOTE : The Unit plan and the Areas given here are Tentative.

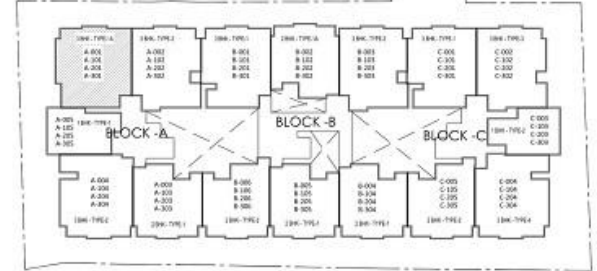
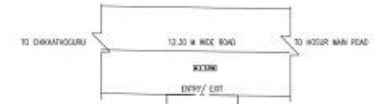
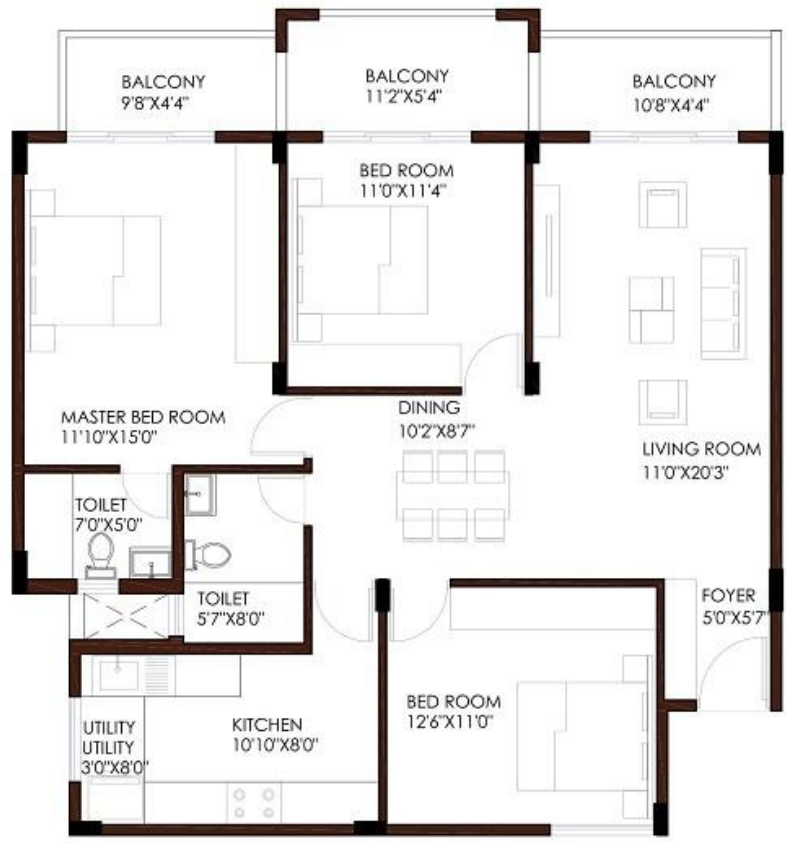
PROJECT :

# ASTORIA PARK

PROPOSED APARTMENT JOINTLY DEVELOPED BY  
N.D.DEVELOPERS PVT.LTD AND SUVASTU ESTATES  
PVT.LTD. ON HOSUR ROAD,BANGALORE

ARCHITECTS:

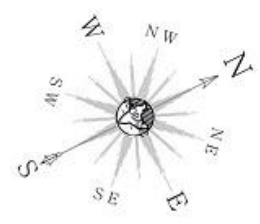




KEY PLAN

3 BHK + 2T - TYPE-1A

SBA : 1580 SQ.FT



UNITS NUMBERS :  
 A-001  
 A-101  
 A-201  
 A-301


NOTE : The Unit plan and the Areas given here are Tentative.

PROJECT :

## ASTORIA PARK

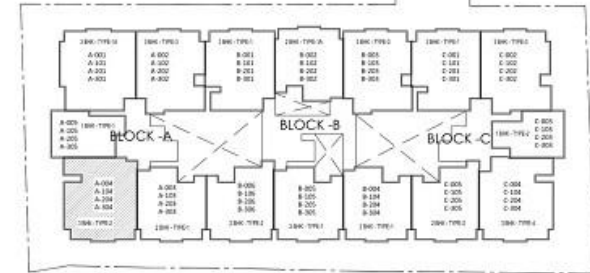
PROPOSED APARTMENT JOINTLY DEVELOPED BY  
 N.D.DEVELOPERS PVT.LTD AND SUVASTU ESTATES  
 PVT.LTD. ON HOSUR ROAD,BANGALORE

ARCHITECTS:



**Architect square**  
 architects | interior designers

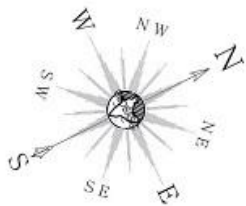




KEY PLAN

3 BHK + 2T - TYPE-2

SBA : 1612 SQ.FT



UNITS NUMBERS :

- A-004
- A-104
- A-204
- A-304

NOTE : The Unit plan and the Areas given here are Tentative.

PROJECT :

## ASTORIA PARK

PROPOSED APARTMENT JOINTLY DEVELOPED BY  
N.D.DEVELOPERS PVT.LTD AND SUVASTU ESTATES  
PVT.LTD. ON HOSUR ROAD,BANGALORE

ARCHITECTS:

