

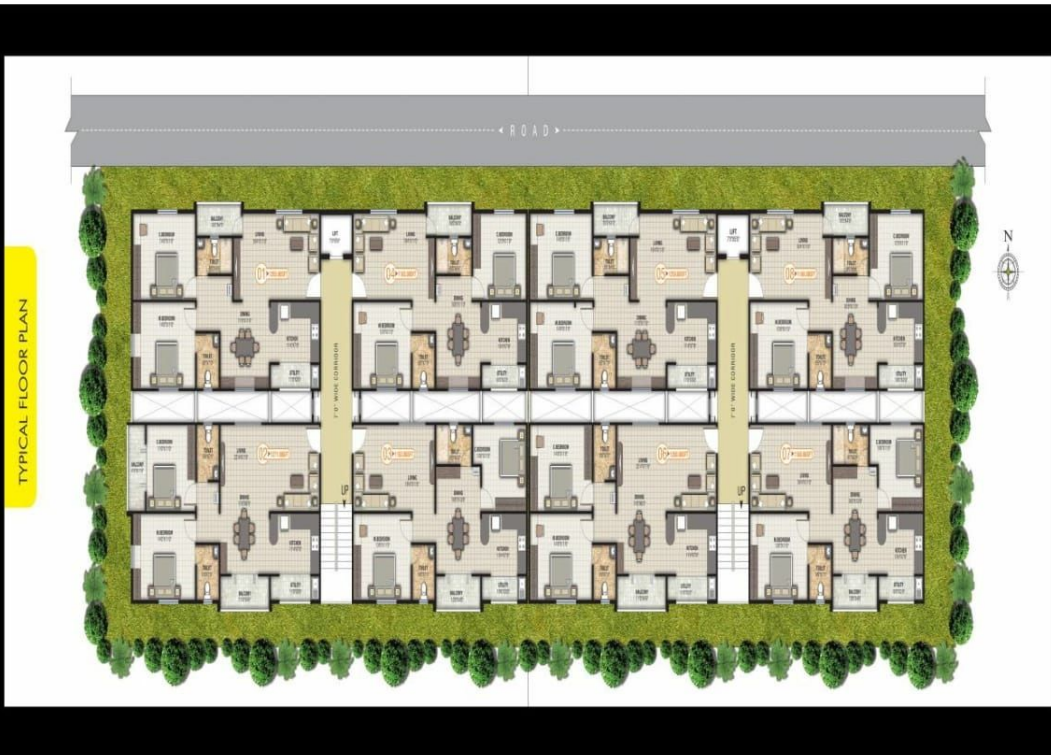
**LOCATION MAP**

**LEGEND**

- SCHOOLS**
  - Wadhwa School (near)
  - Buddha School (near)
  - Wadhwa School (near)
  - Wadhwa School (near)
  - Wadhwa School (near)
- HOSPITALS**
  - Wadhwa Hospital (near)
  - Wadhwa Hospital (near)
  - Wadhwa Hospital (near)
  - Wadhwa Hospital (near)
- NEAREST**
  - Wadhwa (near)
  - Wadhwa (near)
  - Wadhwa (near)
  - Wadhwa (near)
- STAMBS / COMPANY OFFICES**
  - Wadhwa (near)
  - Wadhwa (near)
  - Wadhwa (near)
  - Wadhwa (near)
- SHOPPING MALLS**
  - Wadhwa (near)
  - Wadhwa (near)
  - Wadhwa (near)
  - Wadhwa (near)
- ACCESS / CONNECTIVITY**
  - Wadhwa (near)
  - Wadhwa (near)
  - Wadhwa (near)
  - Wadhwa (near)

**WADHWA**

**RAGHAVENDRA CLASSIC SANNIDHI**





<p><b>FRAMED STRUCTURE:</b> RCC framed structure with seismic compliance resistance.</p> <p><b>SUPER STRUCTURE:</b> 6" Solid blocks for external walls, 4" Solid blocks for internal walls.</p>	<p><b>DOOR:</b> Main door: Solid wood frame with elegantly finished flush shutters. Bedroom and kitchen doors: Solid wood door frame with one side laminated flush flush shutters.</p>	<p><b>WINDOW:</b> Triple Track Aluminium powder coated window with mosquito Mesh and U.S. Gills with external pane.</p>	<p><b>FLOORING:</b> Living, dining, bedroom &amp; kitchen with Vitrified tiles (24"x24")        Bathroom Anti-slip tile flooring with Ceramic tile slabs with 7" height of wall. Balconies and Utility: Antiskid ceramic tiles with water proofing treatments.</p> <p><b>COMMON AREA:</b> Corridors, club area and landing with granite.</p>	<p><b>AMENITIES:</b></p> <ul style="list-style-type: none"> <li>Gymnasium</li> <li>Multipurpose hall</li> <li>Intercom facility</li> <li>Round the clock security</li> <li>MDD Network Dish</li> <li>CCTV Camera</li> <li>Rain water harvesting</li> <li>Vaasthu compliance</li> <li>Generator power back up</li> </ul>				
<p><b>TOILET:</b> Wash basins in all bathrooms, CP fittings of superior make, CWC piping system for cold and hot water with provision for geysers, Porcelain sanitary wares of first-class make.</p>	<p><b>KITCHEN:</b> Block granite kitchen platform with stainless steel sink and T' dials done granite kitchen platform in ceramic glazed finish. Requested to make CP fittings.</p>	<p><b>PAINTING:</b> Interior surfaces: Emulsion paint with two coats of wall paper. Exterior surfaces: One coat of primer and two coats of Acce paint.</p>	<p><b>ELECTRICAL:</b> Wiring concealed with fire resistant wires, Provision for split AC in all bedrooms. Adequate points for lights, fans and other plugs in bedrooms, toilets and kitchen with modular switches of reputed brand. Exhaust fans and geyser points in toilets and kitchen plug points for chimney. Water purifier, Refrigerator and other kitchen appliances in kitchen.</p>	<p><b>TELECOM:</b> Telephone points in living room and master bedroom, Intercom facility in all the units connecting the security.</p> <p><b>TELEVISION:</b> TV point in living and in Bedrooms with MDD Network Dish.</p>	<p><b>WATER SUPPLY:</b> 24 Hours water supply from Borewell.</p>	<p><b>LIFT:</b> Two no. of Automatic lifts of equal make and 6 passenger capacity lifts.</p>	<p><b>GENERATOR:</b> 1 KW power back-up to each apartment. Additional power back-up for lift, water pumps and common area lighting.</p>	<p>CAR PARKING</p>